



**Thinking
vegetable
seeds?**

**Think
Terranova.**

2019 - 2020 EXPORT PRODUCT GUIDE

Terranova
SEEDS

NOV 2019

Contents

Carrot	2	Onions	11
All Seasons	3	Baron	12
Darcy	3	M&R Early Improved	12
Kuroda	3	Mercedes	12
Royal Chantenay	3	Mundulla Gold	12
Cauliflower	4	Murray Brown	13
Selection 174	4	White Spanish	13
Swiss Chard	5	Red Planet	13
Success	5	Gladalan Brown	14
Lettuce	6	Gladalan White	14
Coolguard	7	Isabella	14
Fame	7	Wallon Brown	15
Great Lakes 118	7	Straightleaf	15
Great Lakes 659	7	Pumpkin	16
Raider	8	Butternut Large	17
Summer Salinas	8	Butternut Dusk	17
Super 59	8	Sweet Grey	17
Brown Mignonette	9	Sweet Peppers	18
Green Mignonette	9	California Wonder	19
Slobolt	9	SP1	19
Parris Island Cos	10	SP2	19
		SP4	19
		Notes	20

Quality Seed is our primary focus.

Terranova Seeds exports a range of vegetable seed varieties to distributors and growers in Pacific Islands, Asia, Middle East, Africa and Eastern Europe.

Terranova Seeds has offices and warehouses in Australia and New Zealand.

We are part of the South Pacific Seeds (SPS) Group of companies.

Being part of a specialised vegetable seed company with specialised seed production facilities allows us to provide the highest quality seed offering to our customers.

We are committed to providing high purity seed with high germination rates across a range of open pollinated varieties.

Primarily these are carrots, cauliflower, lettuce, onion, pumpkin and swiss chard. We are looking to increase our range across a wider range of species and varieties.

Our range of Lettuce varieties suits most climatic zones with products suited from cool to temperate growing conditions right through to tropical zones.

With onions we carry a wide range from short day to early long day types, therefore we can cover most day length requirements and climatic zones.

Our flexibility provides our customers with the ability to request a range of pack size options from small foil packs to large bags.

Our commitment to customer requirements through the achievement of highest quality standards ensures that we provide you with seed that performs. Selected seed lots of exceptional quality will be marketed under our Premium Seed Range.

Reliable, high quality seeds. That's what you can count on every time when you think Terranova Seeds.



Carrot

Daucus carota sativus



Thinking quality Carrots? Think **Terranova.**

All Seasons

Open Pollinated Carrot



- Australian bred
- Adaptable variety
- High quality, long uniform tapered carrot
- Orange colour with very strong tops.

Darcy

Open Pollinated Carrot



- Fresh market true Nantes type carrot
- Good shape with bright orange colour
- Smooth, uniform and nicely stumped
- Strong top attachment.

New varieties

We have received excellent feedback and support regarding our selection of OP Nantes and that has encouraged us to widen the selection of carrot varieties that we are working with as follows:

Kuroda

Open Pollinated Carrot



- Having completed our variety selection we are in the process of growing stock seed and expect our first trial seed to be available in 2019 followed by our first commercial seed in 2020.

Royal Chantenay

Open Pollinated Carrot



- First small lots of trial seed will be available by mid 2020.

Cauliflower

Brassica oleracea var. botrytis

Thinking quality Cauliflower?
Think **Terranova.**

Selection 174

Open Pollinated Cauliflower



- Bred in Australia
- Creamy white curd, deep and heavy
- Well protected by inner leaves
- A reliable standard variety
- Maturity 13 – 15 weeks from transplant.

Swiss Chard

Beta vulgaris

Thinking quality Swiss Chard?
Think **Terranova.**

Success

Swiss Chard



- Beautiful dark green savoy leaves
- Very glossy leaves with bright white stem
- Plant is compact (45 – 50 cm)
- Can be packed in a sleeve to enhance presentation and shelf life
- Ideal for whole plant harvest and marketing
- Also suitable for bunching.

A close-up photograph of a head of green lettuce, showing the texture and folds of the leaves. The leaves are a vibrant green color with some lighter, yellowish-green highlights. The background is dark, making the lettuce stand out.

Lettuce

Lactuca sativa

Thinking Iceberg Lettuce? Think **Terranova.**

Coolguard

Iceberg Lettuce



- Vanguard style lettuce
- Produces uniform, medium sized heads under cold conditions
- Heavily savoyed texture
- Sure heading with very short core
- Suitable for the processing market.

Fame

Iceberg Lettuce



- Versatile and easy growing
- Recommended for very warm season cultivation; grows well in hot and tropical conditions
- Compact and uniform heads – medium to dark green
- Moderate Tip Burn resistance
- Bolt tolerant.

Great Lakes 118

Iceberg Lettuce



- Large, dark green wrapper leaves
- Can withstand hot conditions
- Tolerant to Tip Burn
- Produces firm head that has a sweet taste
- Large plant habit.

Great Lakes 659

Iceberg Lettuce



- Medium to large plant habit with a solid head
- Frilled, medium size dark green, smooth leaves
- Widely adaptable variety
- Tolerant to Tip Burn and early bolting
- Performs well under cool conditions.

Thinking Iceberg Lettuce?

Think **Terranova.**

Raider

Iceberg Lettuce



- Large framed Vanguard style lettuce for warm season production
- Very sure heading with excellent Tip Burn tolerance
- Medium-large head size; short core.

Summer Salinas

Iceberg Lettuce



- Medium to large symmetrical shaped head
- Large, firm, medium green leaves
- Suitable for Summer harvesting
- High yielding and good uniformity
- Suitable for cool Summer areas
- Maturity: 6 – 7 weeks from transplant in Summer conditions
- 8 – 9 weeks from transplant in Winter conditions.

Super 59

Iceberg Lettuce



- Medium frame, head and ribs
- Dark green leaves with a large butt
- Good resistance to bolting, Pink Rib and Tip Burn
- Good tolerance to heat and frost
- Similar to Great Lakes 659
- Maturity: 10 – 11 weeks from transplant depending on growing conditions.

Thinking Specialty Lettuce? Think **Terranova.**

Brown Mignonette

Specialty Lettuce



- Small butterhead type lettuce
- Soft, lightly savoyed dark green and russet coloured leaves.

Green Mignonette

Specialty Lettuce



- Small butterhead type lettuce
- Small medium green heads
- Soft, slightly savoyed leaf.

Slobolt

Specialty Lettuce

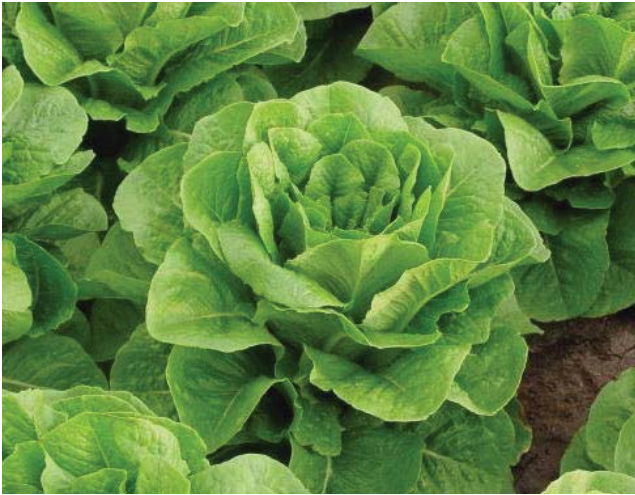


- Very slow bolting, Summer plant
- Thick clusters of light green, blistered, frilled leaves
- Can be harvested as whole head or just pluck the outer leaves off letting the plant continue to grow
- Matures in 42 – 45 days.

Thinking Cos - Romaine Lettuce? Think **Terranova.**

Parris Island Cos

Romaine Lettuce



- Upright to cylindrical plant habit
- Large, dark green leaves with pale interior
- Forms upright head
- Leaf is slightly savoyed
- Slow to bolt
- Suits Spring, Summer and Autumn conditions.

Onions

Allium cepa

Thinking Intermediate Day Onions?

Think **Terranova.**

Baron

Open pollinated brown onion



- More vigour compared with other Early Long Keeper types & produces a good percentage of large bulbs
- Some resistance to Fusarium/Pink Root noted in the field, leading to yield advantages in warm seasons and dry weather close to harvest
- Performs well on lighter soils and non-irrigated land
- Globe shaped pungent bulbs
- Very good skin quality and storage potential.

Mercedes

Open pollinated brown onion



- Uniform bulb shape
- Excellent storage potential
- Excellent globe shaped bulbs
- Intermediate day length type.

M&R Early Improved

Open pollinated brown onion



- Superior strain of the original NZ variety
- Excellent storage potential
- Excellent globe shaped bulbs
- Early Intermediate maturity.

Mundulla Gold

Open pollinated brown onion



- Late brown selected for storage and colour
- Suited to late sowing in its slot
- Strong vigour, handles heat well
- Uniform dark, glossy brown colour
- High yielding, uniform globe shaped bulbs.

Thinking Intermediate Day Onions?

Think **Terranova.**

Murray Brown

Open pollinated brown onion



- Late brown, very vigorous, high yielding variety
- Excellent storage potential
- Dark brown skins with good skin retention
- Similar characteristics to Mundulla Gold
- Globe shaped bulbs.

White Spanish

Open pollinated white onion



- Outstanding skin retention
- Excellent storage potential
- Very firm main season onion
- Industry standard for storage white.

Red Planet

Open pollinated red onion



- Good size
- Excellent colour
- Good skins
- High % of single centres
- Medium pungency
- Strong foliage
- Thin, tight neck
- Well defined rings with good colour
- Uniform, globe shaped bulbs.

Thinking Short Day & Bunching Onions? Think **Terranova.**

Gladalan Brown

Open pollinated brown onion



- Medium to large size globe shape bulb
- Shiny straw brown skin, small necks
- Mild flavour
- Heavy yielder with some storage potential
- Performs well in highland tropical zones.

Gladalan White

Open pollinated white onion



- Extra early, produces medium to large sized white round bulbs
- Stores well for a short day variety
- Also a popular variety for spring onion production
- Performs well in highland tropical zones.

Isabella

Open pollinated brown onion



- Texas Grano 438 with high yield potential
- Large bulb with excellent bolting tolerance
- Maturity 190 days
- Store for 4 months under proper conditions
- High tolerance to Pink Root Disease & Fusarium Basal Rot.

Thinking Short Day & Bunching Onions? Think **Terranova.**

Wallon Brown

Open pollinated brown onion



- Mid short day onion – suitable for tropical latitudes
- Early maturing and mild flavour
- Best suited to fresh market
- High percentage of globe shaped onions.

Straightleaf

Bunching spring onion



- Blue green upright foliage
- Single stemmed
- Suitable for year round cultivation.

WORLD LATITUDES



Pumpkin

Cucurbita



Thinking quality Pumpkins?

Think **Terranova.**

Butternut Large

Open Pollinated Butternut Pumpkin



- Blocky ended fruit on a manageable vine
- Delicious flavour
- Mustard yellow skin with bright orange flesh
- Typical fruit are 20 x 12 cm.

Sweet Grey

Hybrid Pumpkin



- Flat-round medium size fruit 3 – 5 kg
- Smooth grey skin with slight rib and thin rind
- Average 1 – 2 fruit set per plant, heavy yields
- Excellent storage, up to 7 months with good ventilation
- Sweet rich flavour.

Butternut Dusk

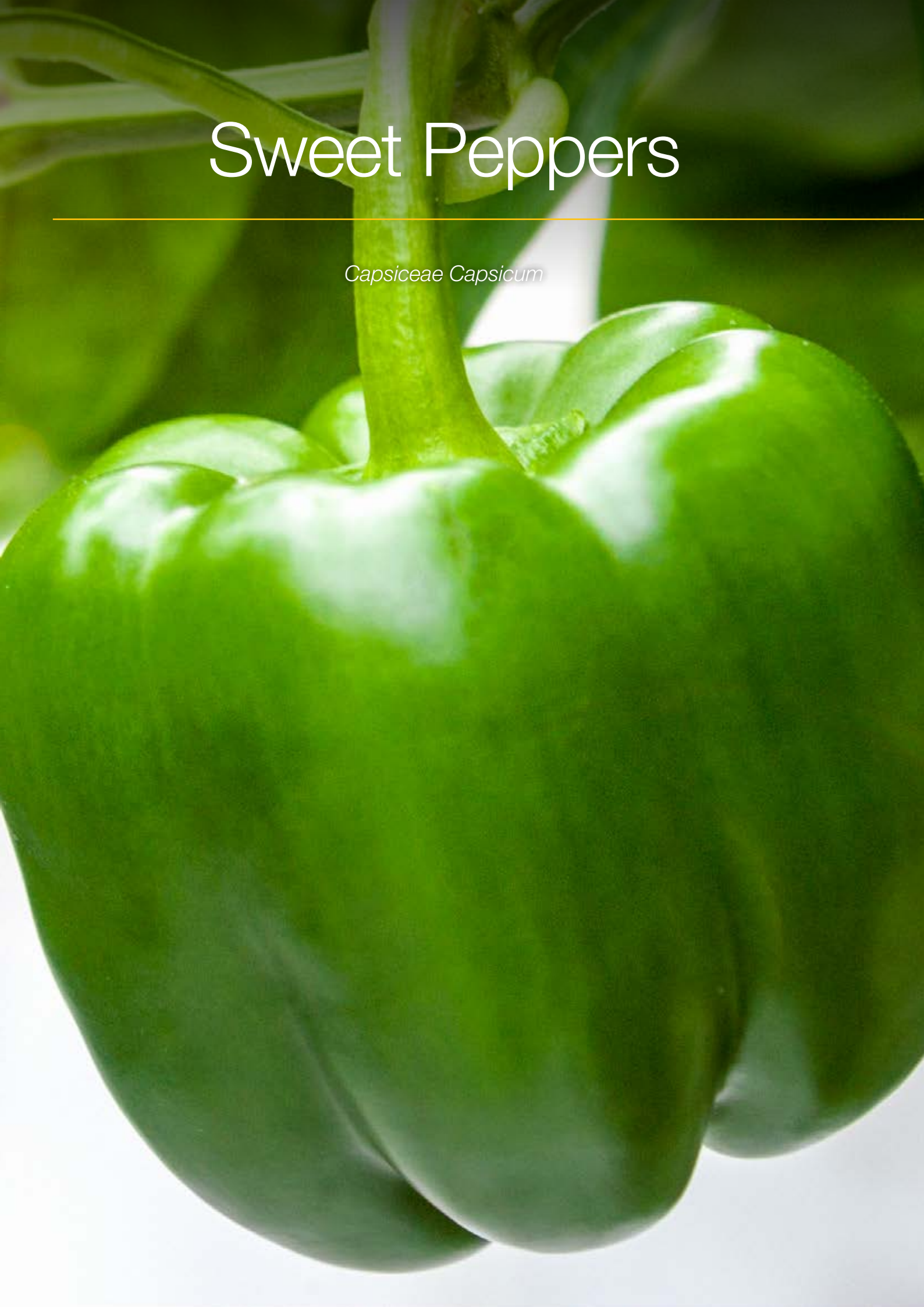
Open Pollinated Butternut Pumpkin



- Highly uniform, large blocky fruit, 1.5 – 2.5 kg
- Very distinctive dark orange flesh
- Small seed cavity, with very high yield potential
- Matures a few days later than Butternut Large
- Fruit size 20 – 25 cm by 10 – 12 cm
- Intermediate Resistance: PRSV, ZYMV
- Partial resistance to Etch.

Sweet Peppers

Capsiceae Capsicum



Thinking quality Sweet Peppers?

Think **Terranova.**

California Wonder

Open Pollinated Sweet Pepper



- Popular outdoor open field variety used for processing, fresh market and home garden
- Fruit ripen from dark green to red
- Blocky bell shape with mostly 4 lobes
- Fruit size approx 10 – 14 cm long and 10 – 12 cm diameter
- Plant height approx 70 – 75 cm.

SP2

Hybrid Capsicum - Field Type



- Large, deep blocky shape
- Later set fruit maintains good size, shape and quality
- Compact plant habit
- Good leaf cover
- Less lodging and fruit burn under pressure conditions
- Good tolerance to crazing and shoulder splitting
- Intermediate Resistance: Xcv 1-3.

SP1

Hybrid Capsicum - Field Type



- Ripens well in warm to hot conditions
- Large, deep blocky shape
- Green to red
- Size 10cm x 9cm
- Bush maintains good leaf cover
- Exceptional fruit quality in Winter/Spring
- Very firm fruit when red
- 4 Lobed fruit with thick walls
- Intermediate Resistance: Xcv 1-3 / TSWV.

SP4

Hybrid Capsicum - Field Type



- Blocky, 4 lobed fruit
- Thick walls
- Excellent shelf life
- Green to yellow
- Has shown excellent continuous setting ability
- Intermediate Resistance: Xcv 1-3.



Thinking vegetable seeds?
Think **Terranova.**



Australia

13/19 Chifley Street,
Smithfield NSW 2164 Australia
Tel (612) 9616 1200
www.terrnovaseeds.com.au

New Zealand

20 Rennie Drive, Mangere,
Manukau 2022 New Zealand
Tel (649) 2751919
www.terrnovaseeds.co.nz